

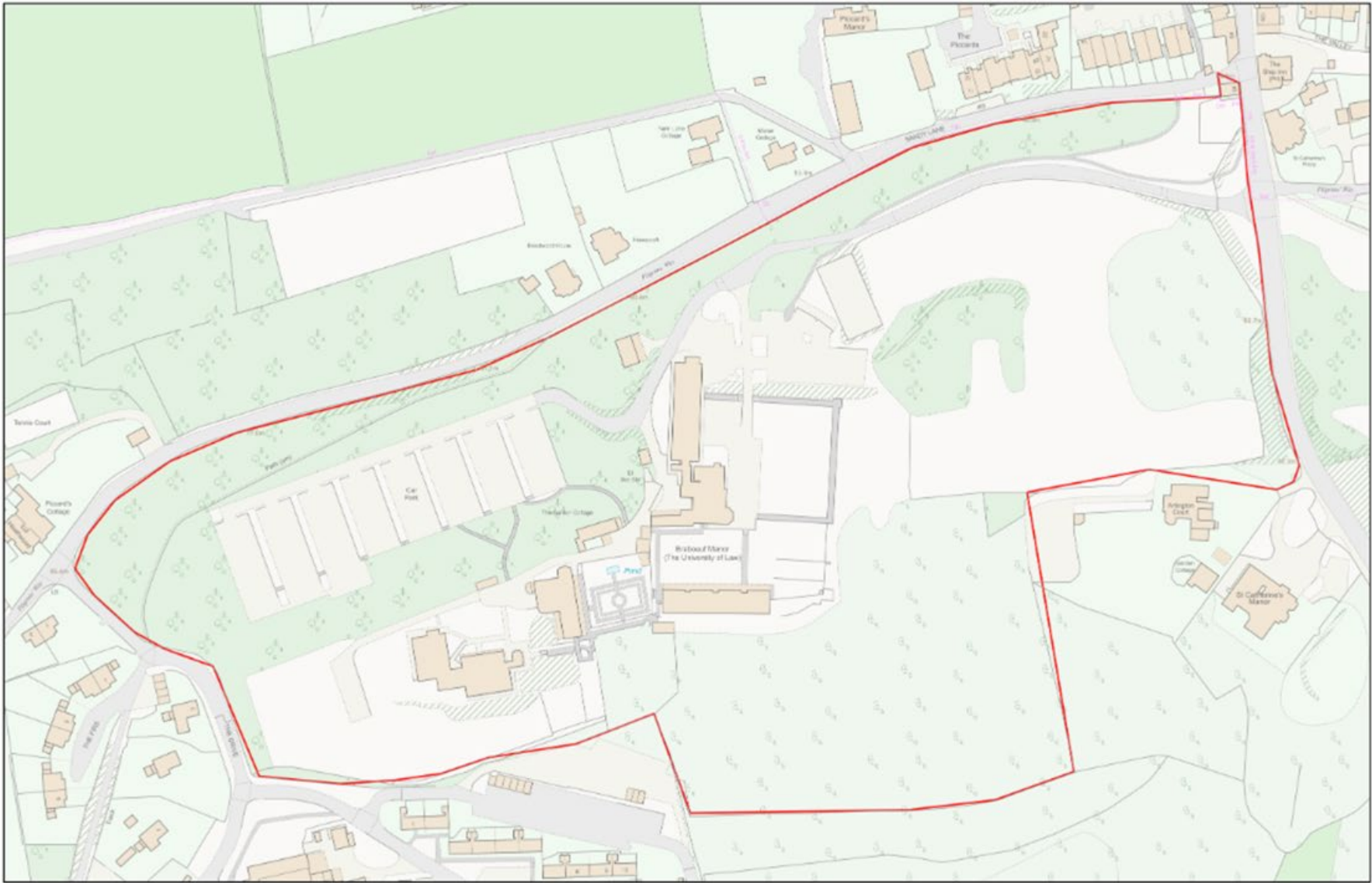
**23/P/01851**

**The University of Law, Braboeuf Manor,  
Portsmouth Road,  
Guildford**

[Previous](#)

[Next](#)

[Home](#)



**Site Location Plan**

[Previous](#)

[Next](#)

[Home](#)



Grade II Listed Braboeuf Manor and curtilage listed buildings

[Previous](#)

[Next](#)

[Home](#)



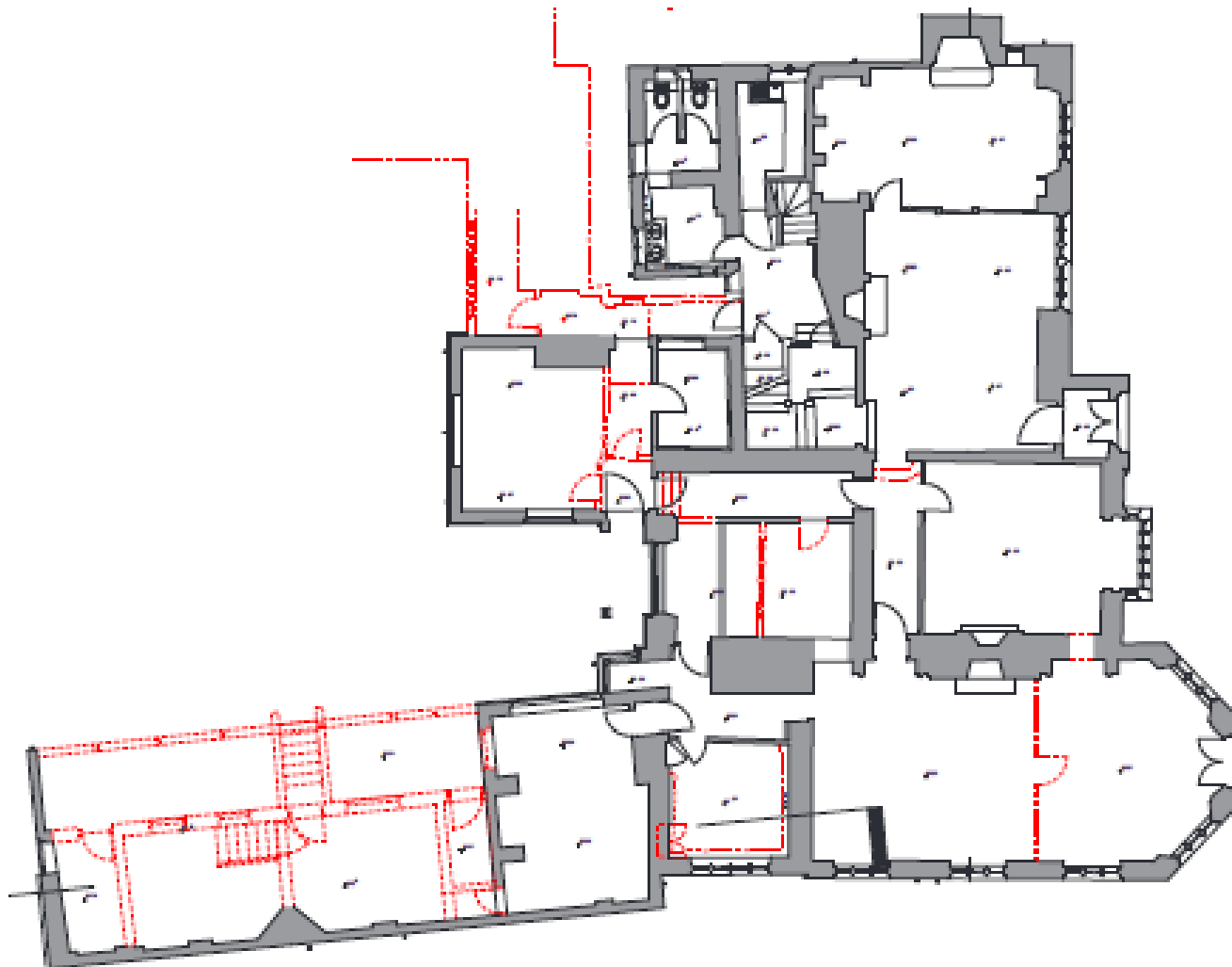
**Braboeuf Manor**



[Previous](#)

[Next](#)

[Home](#)



Braboeuf Manor ground floor demolition plan



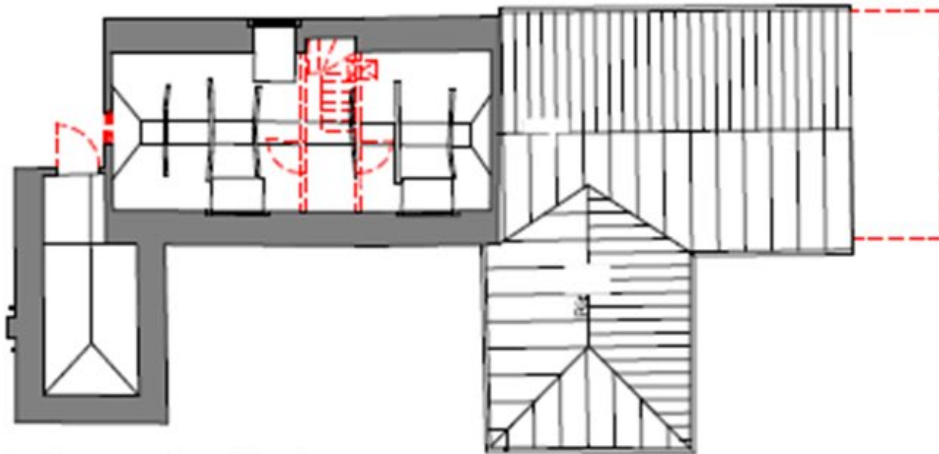
[Previous](#)

[Next](#)

[Home](#)

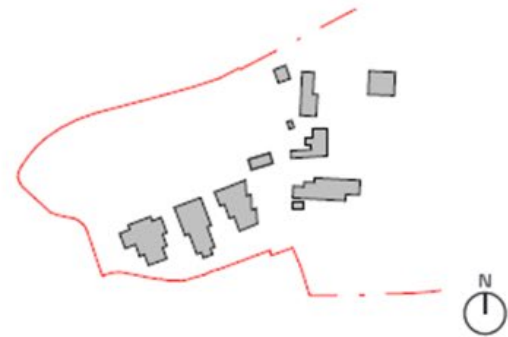


Garden Cottage



Garden Cottage roof demolition plan

Key Plan



ous

Next

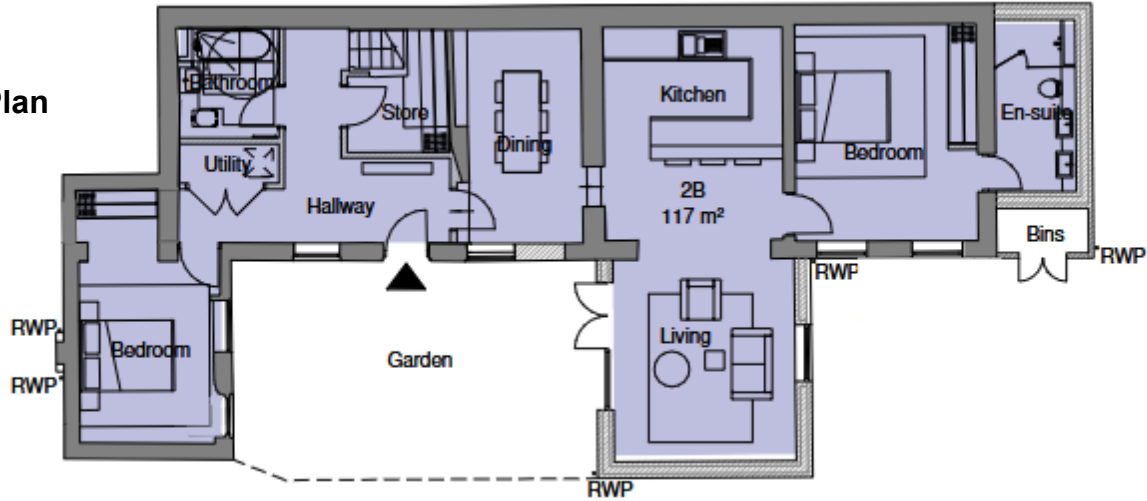
Home

Previous

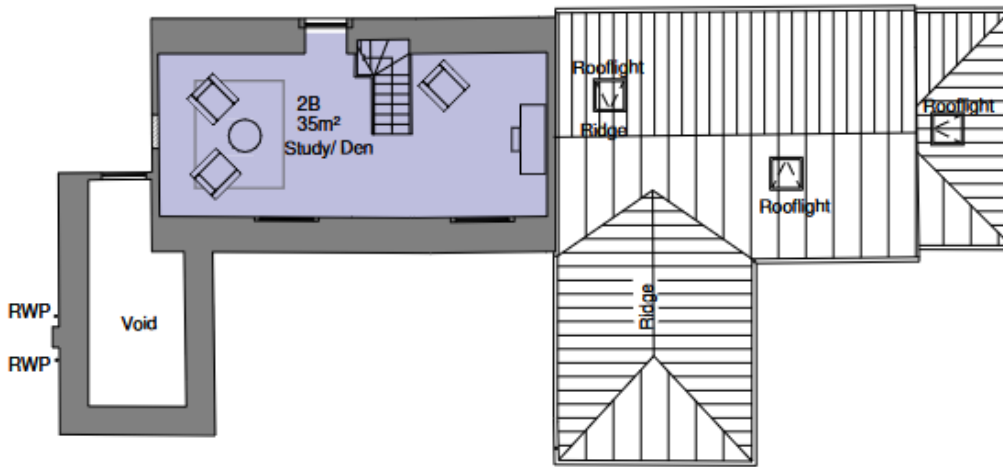
Next

Home

**Ground Floor Plan**



**First Floor Plan**



**Garden Cottage – Proposed Floor Plans**

[Previous](#)

[Next](#)

[Home](#)

# The Walled Garden



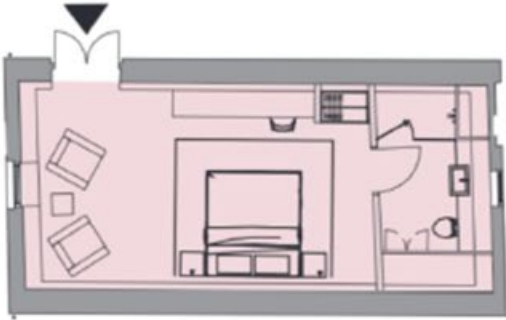




Key Plan



## The Cowshed



Cowshed ground floor plan

Key Plan



Cowshed roof plan

Key

■ C2 Amenity

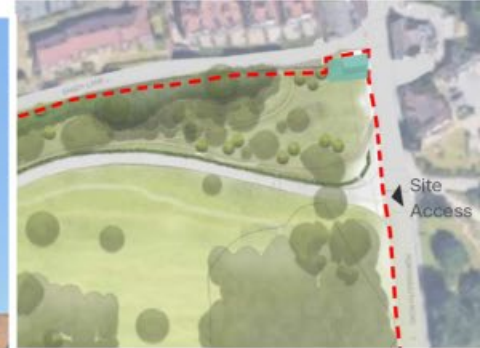


Cowshed proposed west elevation

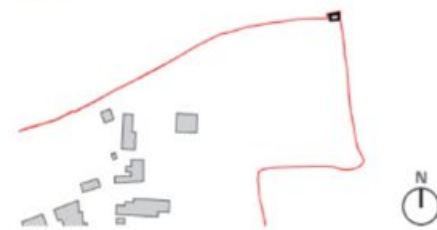
[Previous](#)

[Next](#)

[Home](#)



Key Plan



Pound Cottage

[Previous](#)

[Next](#)

[Home](#)



**Illustrative View – Blocks B, D & Braboeuf Manor**

[Previous](#)

[Next](#)

[Home](#)

[Previous](#)

[Next](#)

[Home](#)

[Previous](#)

[Next](#)

[Home](#)

[Previous](#)

[Next](#)

[Home](#)

[Previous](#)

[Next](#)

[Home](#)

[Previous](#)

[Next](#)

[Home](#)



[Previous](#)

[Next](#)

[Home](#)

[Previous](#)

[Next](#)

[Home](#)

[Previous](#)

[Next](#)

[Home](#)

[Previous](#)

[Next](#)

[Home](#)

[Previous](#)

[Next](#)

[Home](#)