

24/P/01104

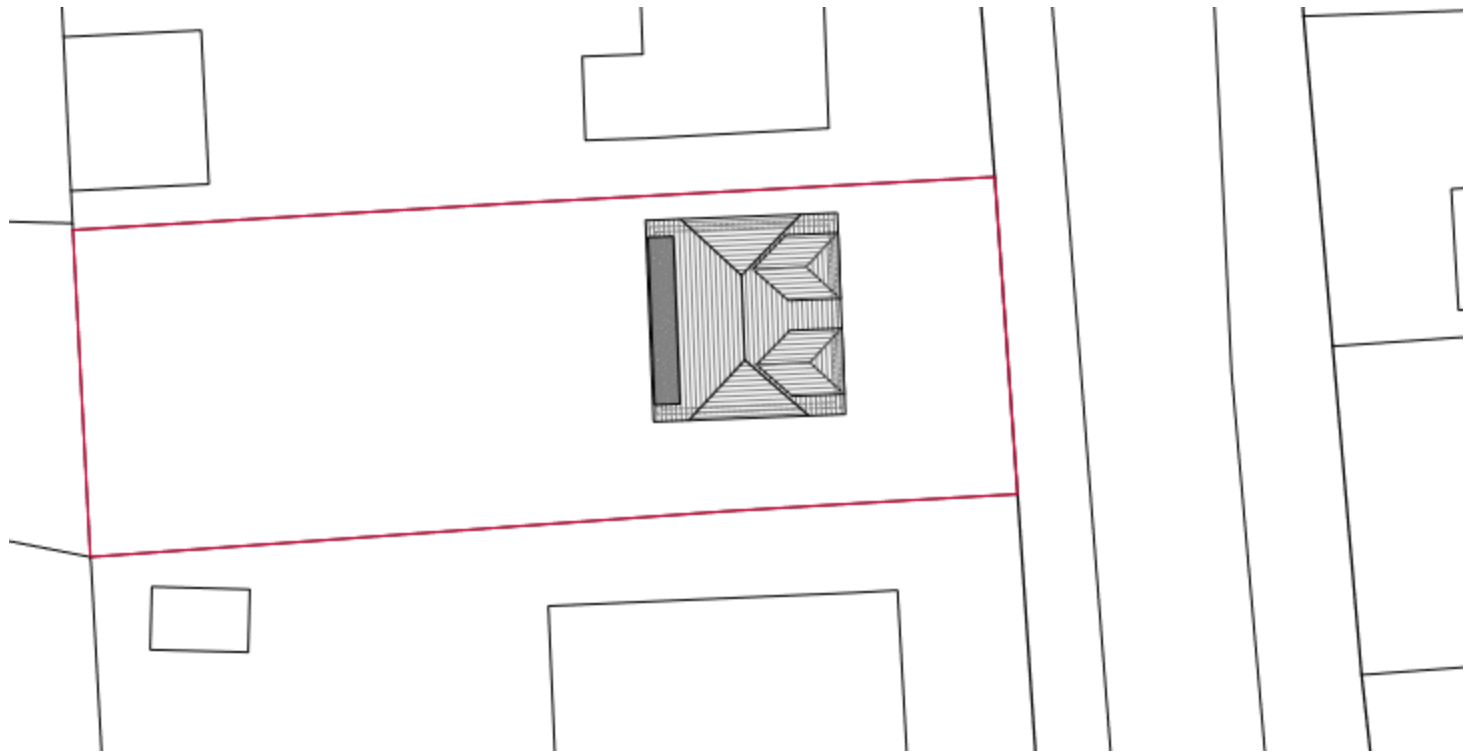
**15 Christmas Pie Avenue
Normandy
Guildford**

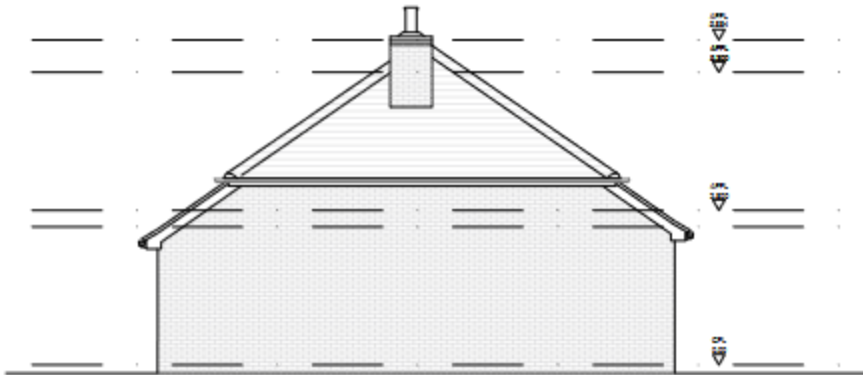
[Previous](#)

[Next](#)

[Home](#)







Northern Elevation



Eastern Elevation



Southern Elevation



Western Elevation



Northern Elevation



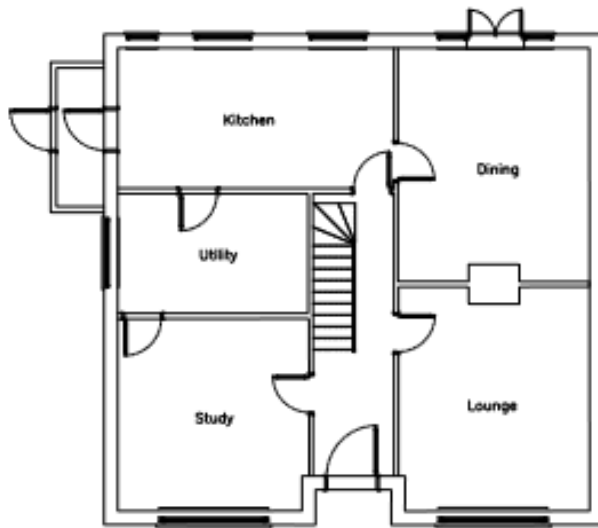
Eastern Elevation



Southern Elevation

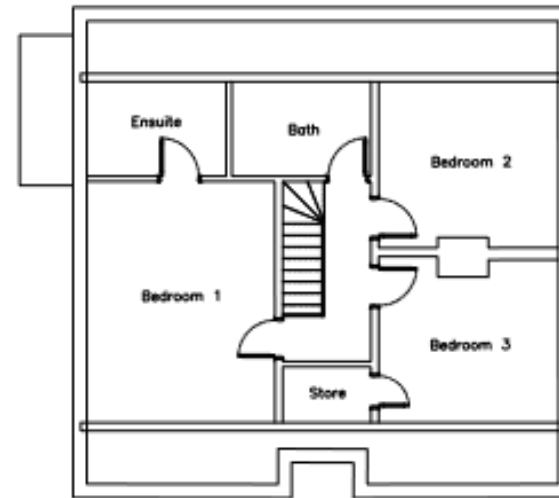


Western Elevation



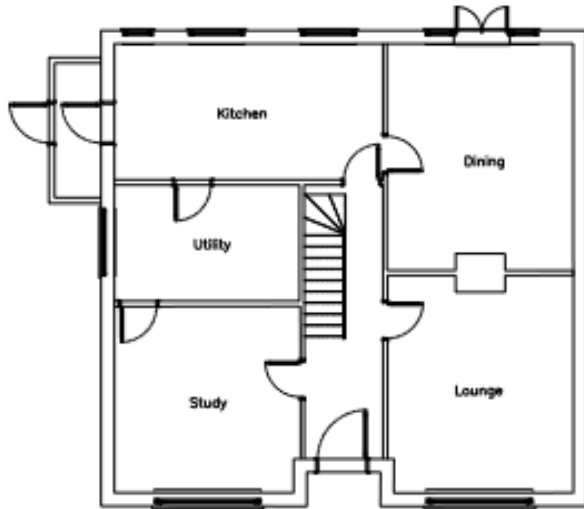
Ground Floor Plan

GEA = 91.6 m²
 GIA = 78.7 m²

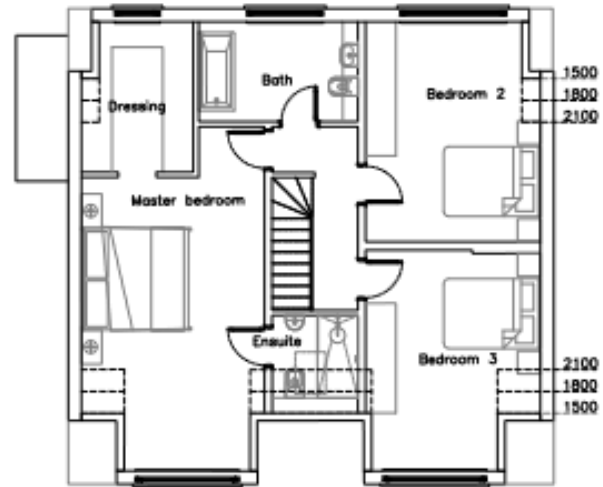


First Floor Plan

GEA = 91.6 m²
 GIA = 58.8 m²



Ground Floor Plan
as existing



First Floor Plan

Proposed floor plan

Previous

Next

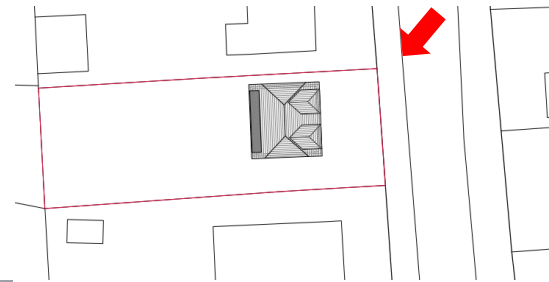
Home



Existing



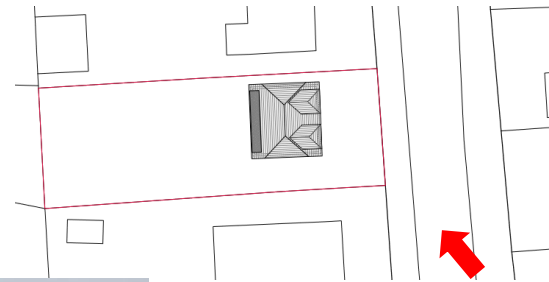
Proposed



[Previous](#)

[Next](#)

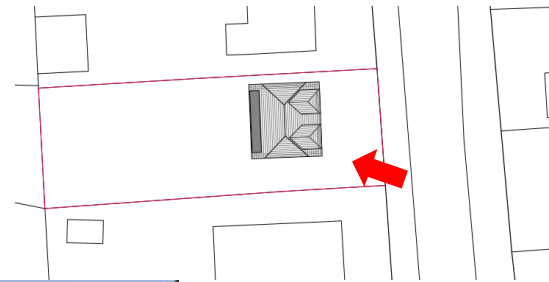
[Home](#)



[Previous](#)

[Next](#)

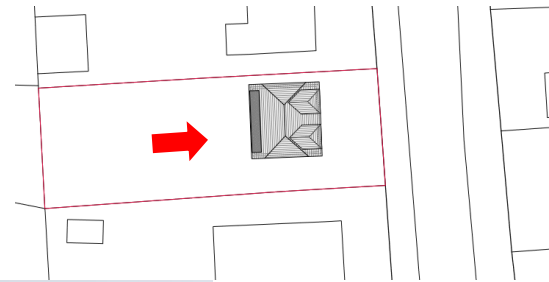
[Home](#)



[Previous](#)

[Next](#)

[Home](#)



[Previous](#)

[Next](#)

[Home](#)

No.29



No.25



No.23



No.21



No.17



No.33



No.31



No.18



No.16



Legend

- ★ Application site
- ★ Property with a front dormer
- ★ Property with a front dormer and a similar roof design

Properties that have a front dormer and/or feature a similar roof design as proposal

Previous

Next

Home