

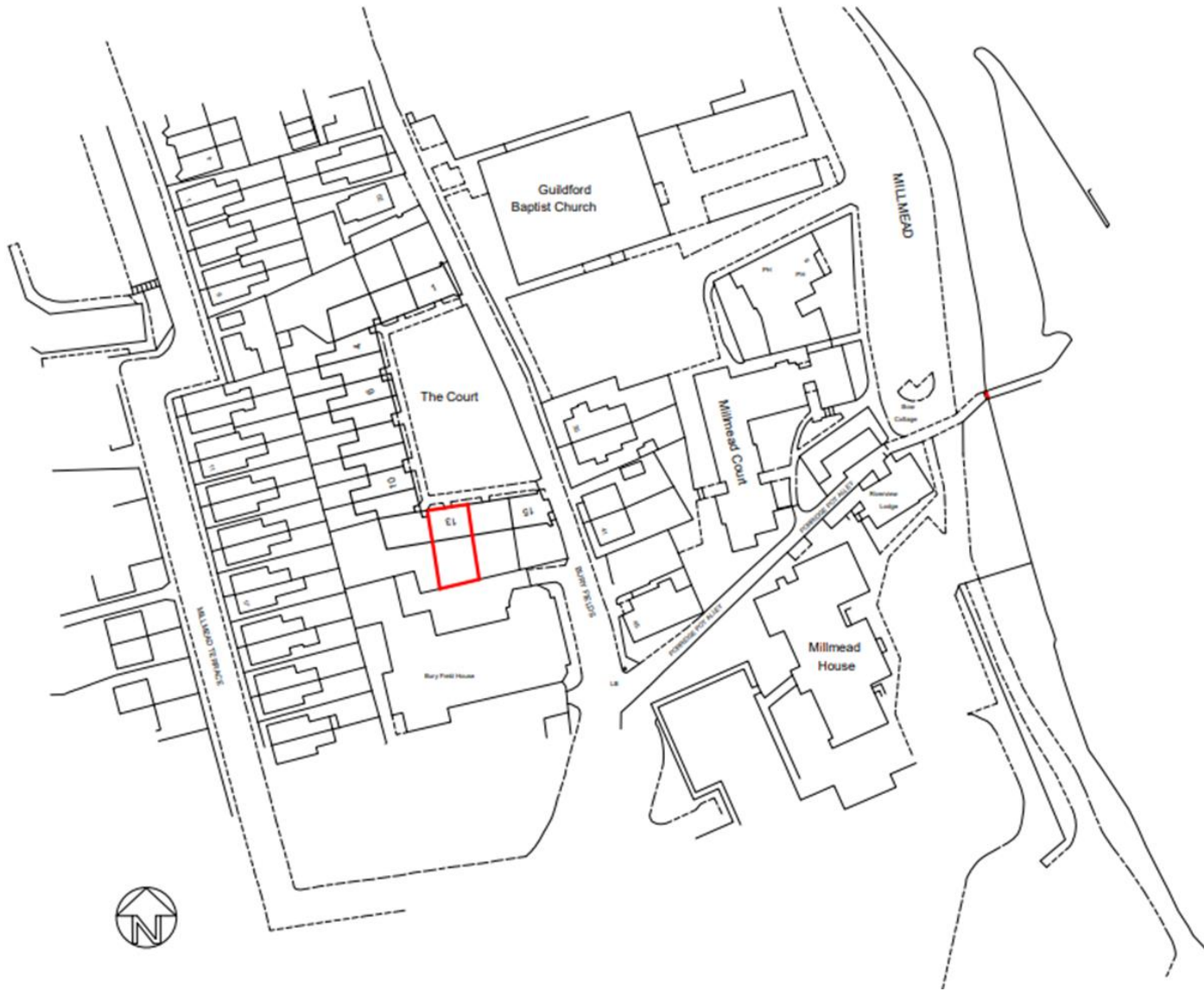
23/P/02076 & 23/P/02077

**13 The Court, Bury Fields,
Guildford, GU2 4BA**

[Previous](#)

[Next](#)

[Home](#)





Rear Elevation

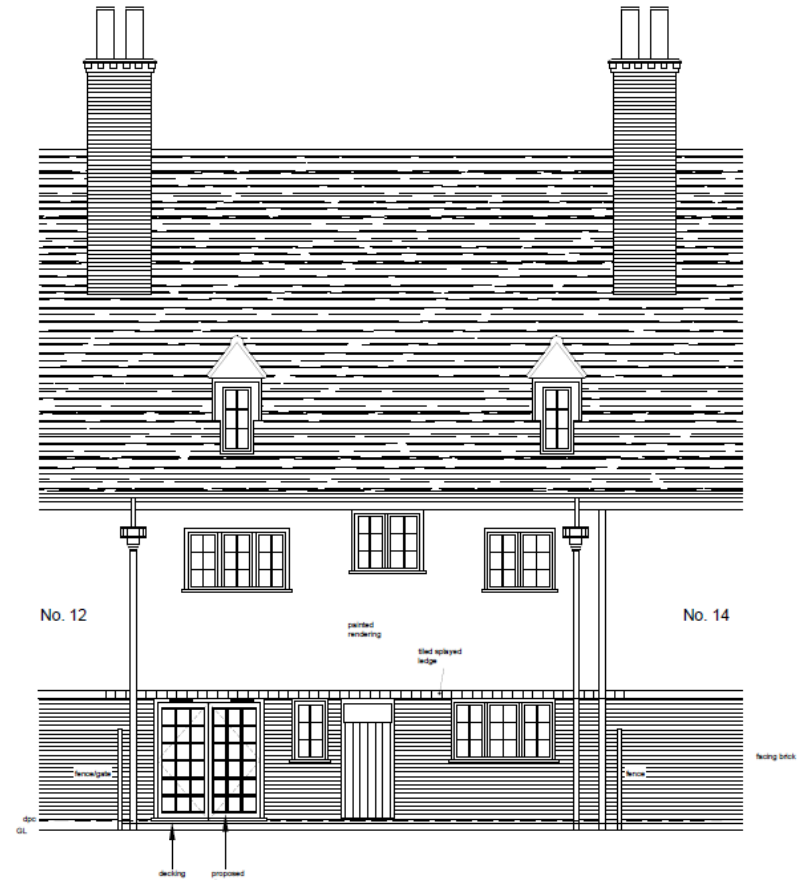
[Previous](#)

[Next](#)

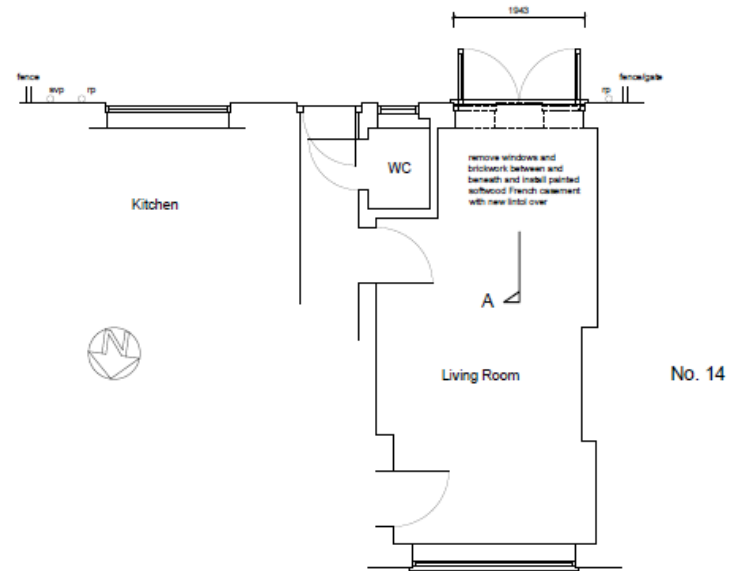
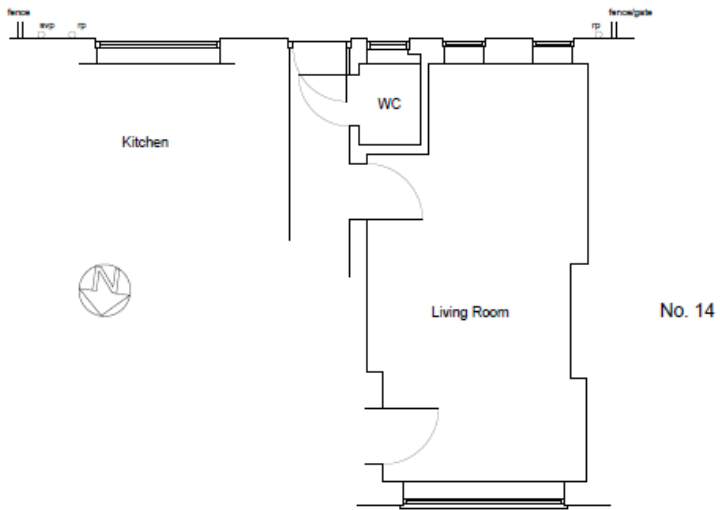
[Home](#)

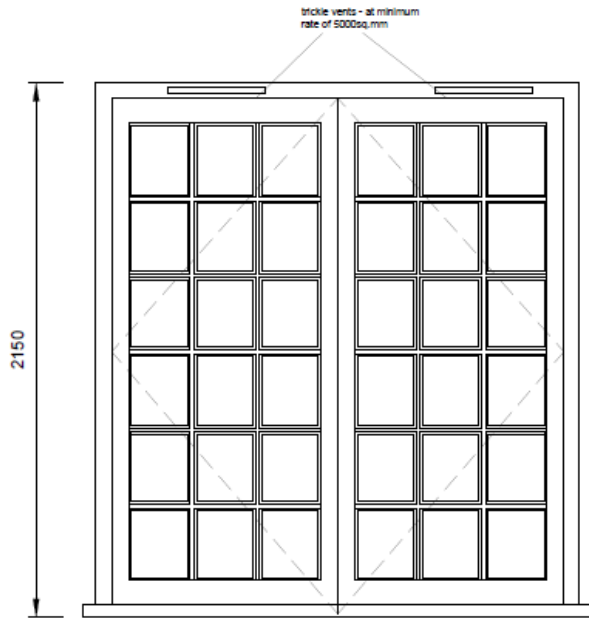


Existing Rear Elevation



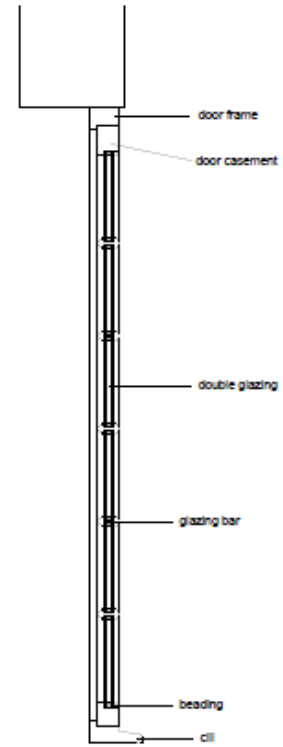
Proposed Rear Elevation



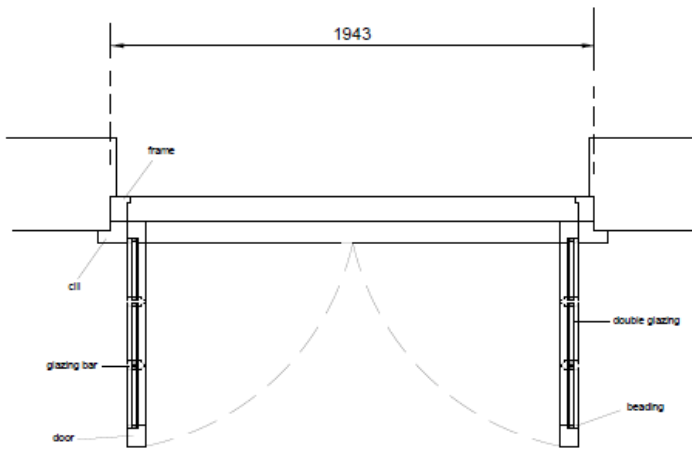


FRENCH CASEMENT
TO LIVING ROOM

ELEVATION



SECTION



PLAN

All joinery to be painted softwood

Double glazing 4mm clear toughened Low E glass panes and 20mm gap. U-value 1.4 W/sq.m K.

Safety glass to be used.



[Previous](#)

[Next](#)

[Home](#)

23/P/02076 - Removal of two ground floor windows and brickwork between and insertion of a pair of doors.

23/P/02077 - Listed Building Consent for the removal of 2 ground floor windows and brickwork between and insertion of a pair of doors.