

**21/P/01211**

**Land at May and Juniper Cottages**

**Ash Green Road**

**Ash**

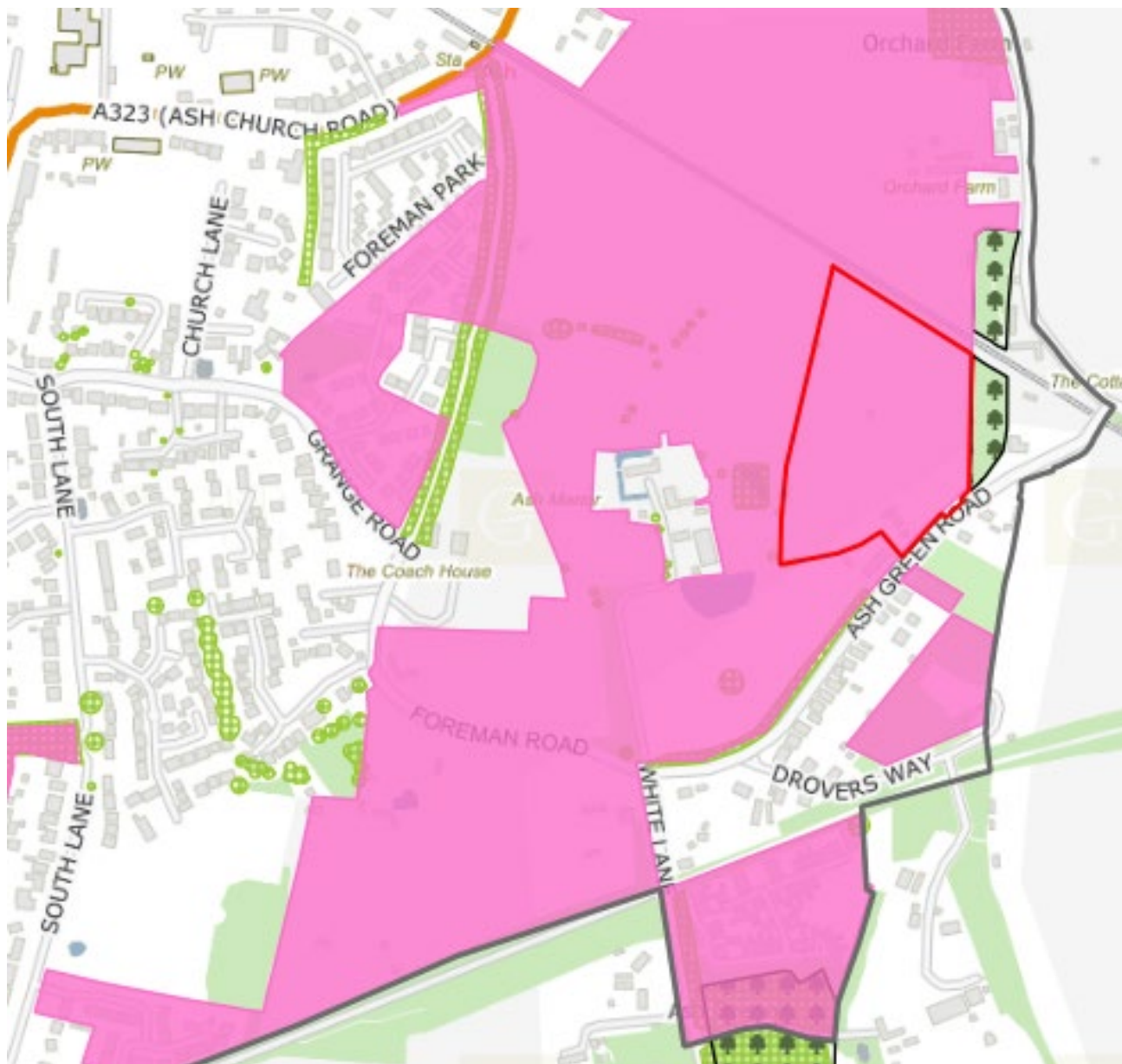
**GU12 6JH**

[\*\*Previous\*\*](#)

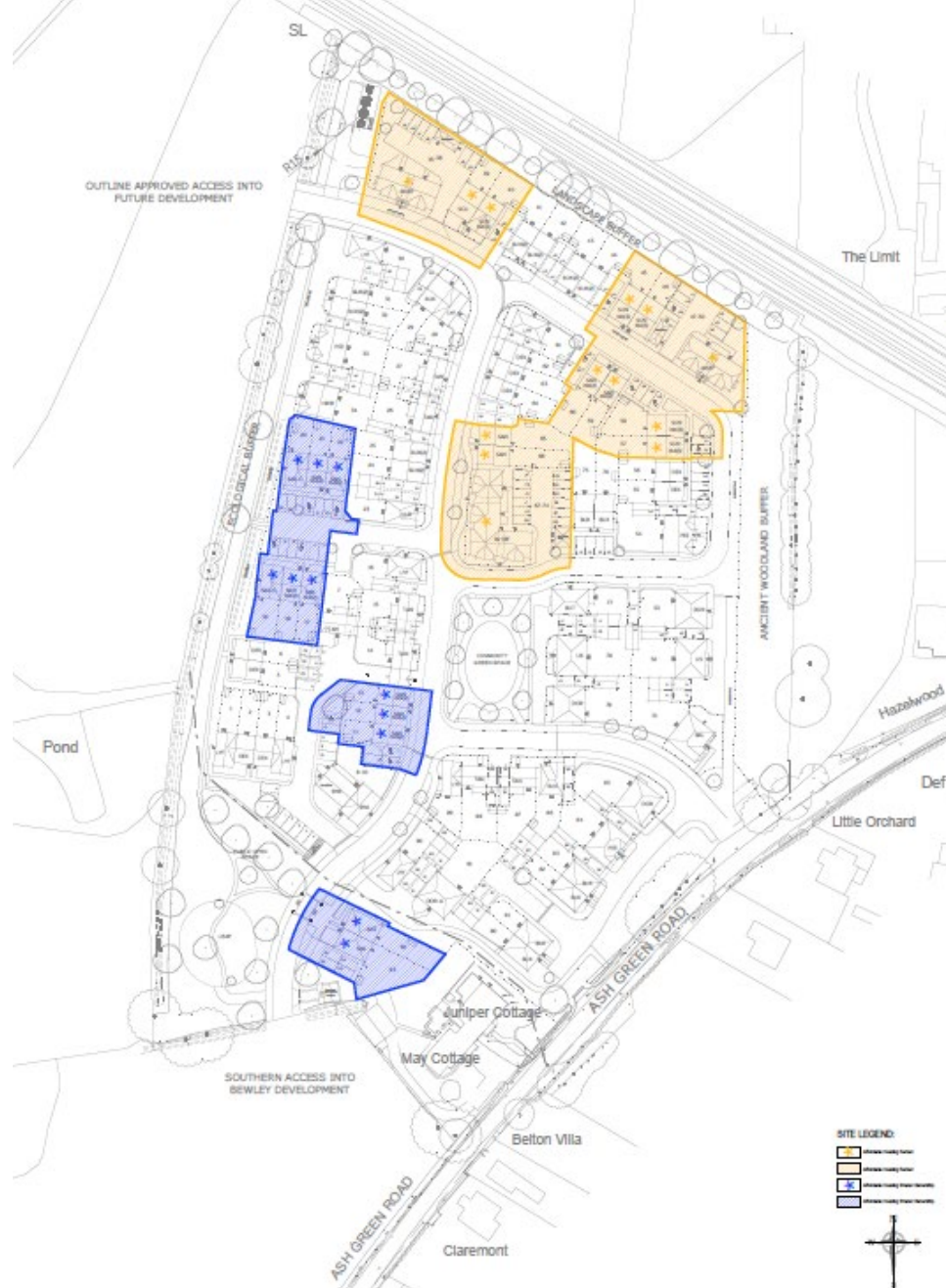
[\*\*Next\*\*](#)

[\*\*Home\*\*](#)















**Street scenes B-B and C-C**

[Previous](#)

[Next](#)

[Home](#)



Street scenes D-D and E-E

Previous

Next

Home





**Street scene F-F – Relationship  
with the Ash Manor Complex**

[Previous](#)

[Next](#)

[Home](#)



STREET SCENE: PLOTS 11-16



STREET SCENE: PLOTS 23-27

**Plots 11 – 16 and 23 - 27**

**Previous**

**Next**

**Home**





STREET SCENE EXTRACT: PLOTS 65-74



STREET SCENE EXTRACT: PLOTS 67-76

**Plots 30 – 34 and 67 - 76**

[Previous](#)

[Next](#)

[Home](#)



STREET SCENE EXTRACT: PLOTS 77-79



STREET SCENE EXTRACT: PLOTS 82-85

**Plots 77 – 79 and 82 - 85**

**Previous**

**Next**

**Home**





STREET SCENE EXTRACT: PLOTS 30-34



STREET SCENE B-B EXTRACT: PLOTS 67-76

**Plots 30 – 34, 1 – 4 and 8 - 10**

**Previous**

**Next**

**Home**







- Site boundary
- Development area
- Open space
- Existing buildings
- ✱ Enclosed public spaces
- On-site primary routes
- ➔ Access to development areas
- Key off-site routes
- New roundabout
- Access to Ash Manor only
- - - Key pedestrian and cycle routes / PRoW
- Ash Road bridge
- - - Railway line
- Railway station
- Existing gypsy and traveller's site
- Water bodies
- ✱ Provision of flood compensation land (area subject to detailed assessment)
- Allocated land not included in study area
- - - Possible access

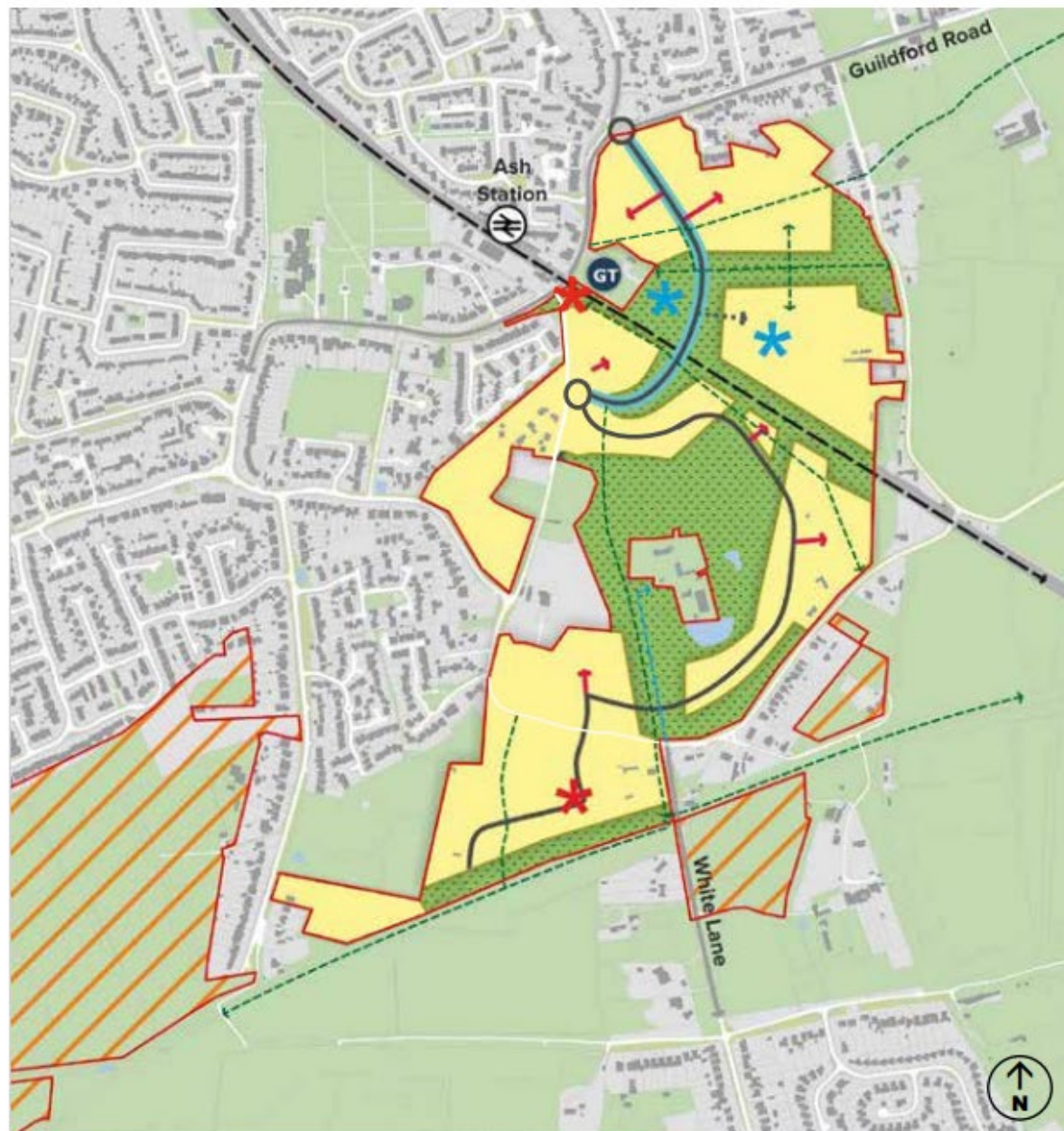


Fig 49: Illustrative application of development principles to Ash and Tongham





THE SITE

[Previous](#)

[Next](#)

[Home](#)





[Previous](#)

[Next](#)

[Home](#)



[Previous](#)

[Next](#)

[Home](#)





[Previous](#)

[Next](#)

[Home](#)



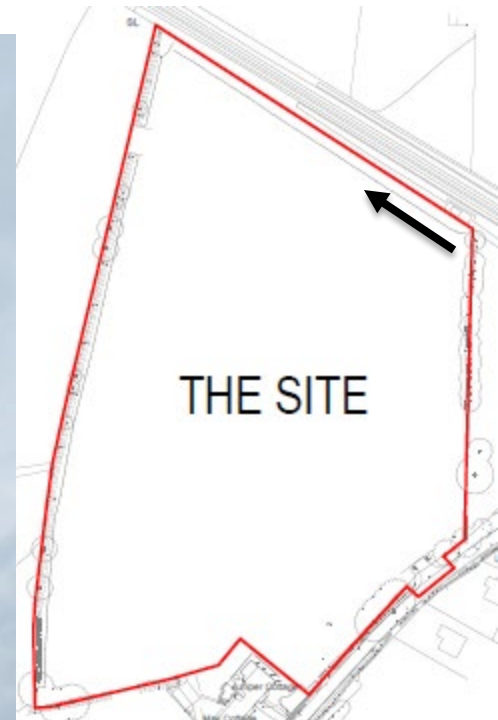


[Previous](#)

[Next](#)

[Home](#)





[Previous](#)

[Next](#)

[Home](#)



[Previous](#)

[Next](#)

[Home](#)





[Previous](#)

[Next](#)

[Home](#)

[Previous](#)[Next](#)[Home](#)





[Previous](#)

[Next](#)

[Home](#)



[Previous](#)

**Next**

**Home**







## Tree protection plans

[Previous](#)
[Next](#)
[Home](#)