

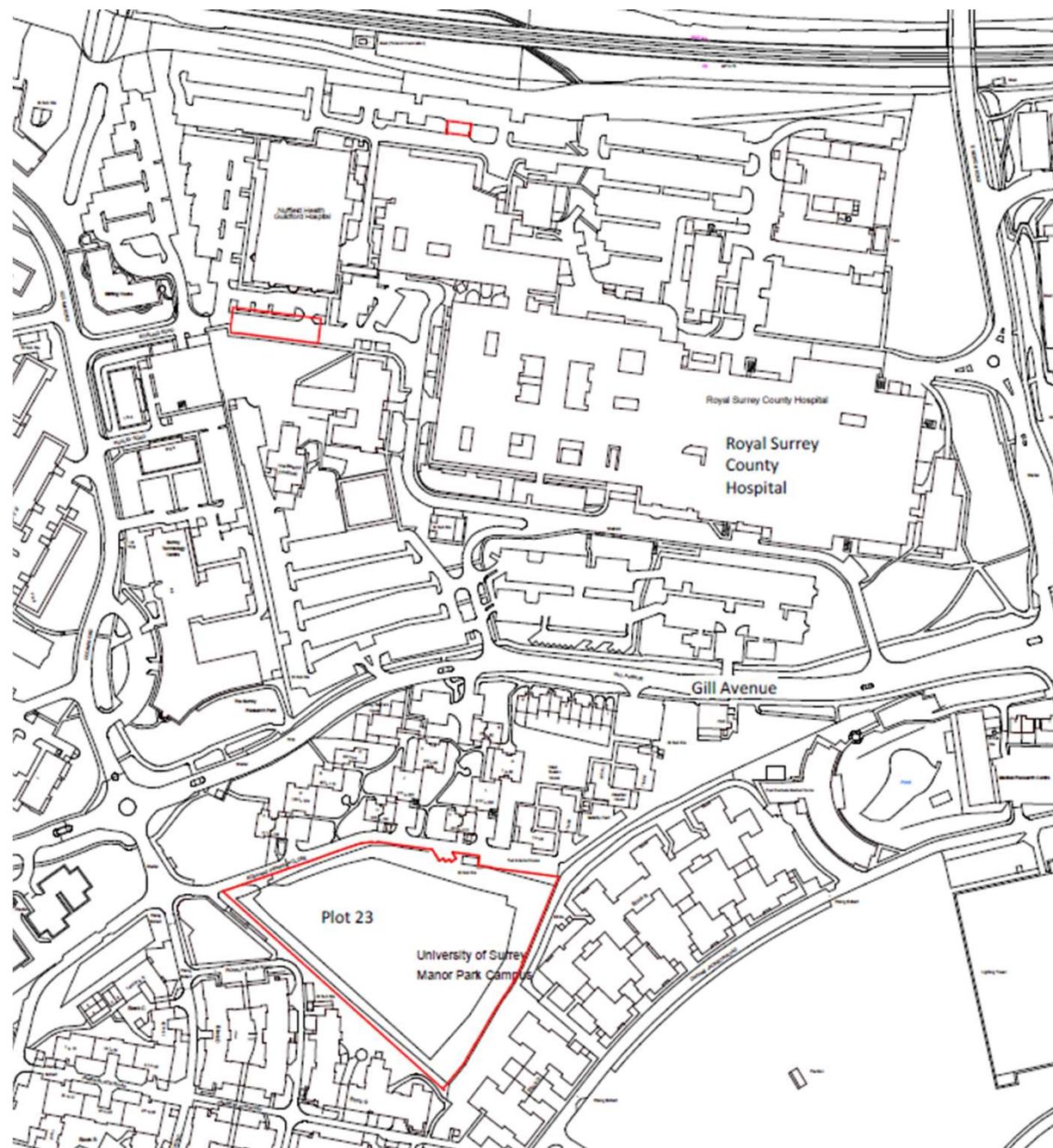
21/P/00817

**Royal Surrey County Hospital
Egerton Road
Guildford**

[Previous](#)

[Next](#)

[Home](#)

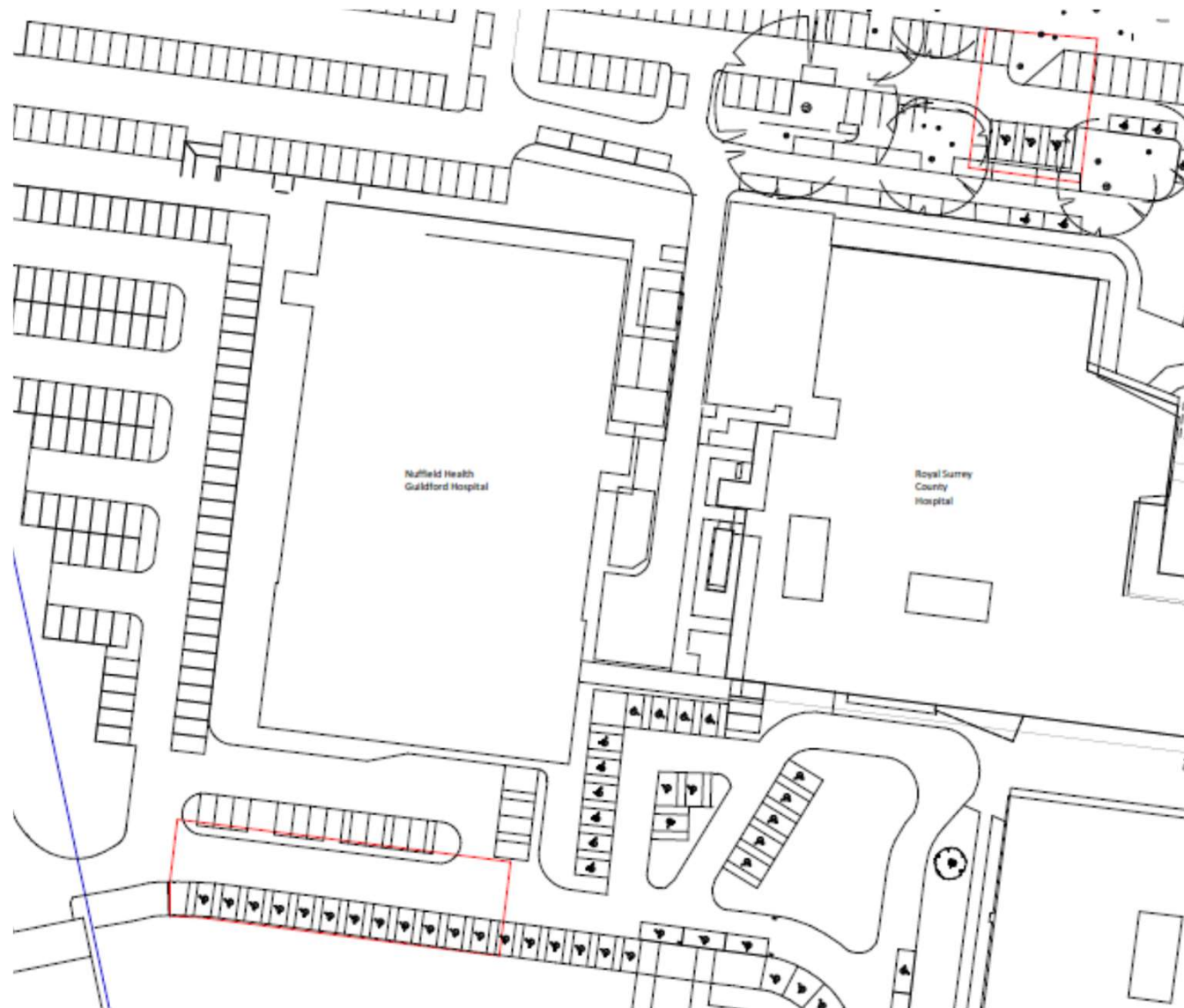


Location plan

[Previous](#)

[Next](#)

[Home](#)

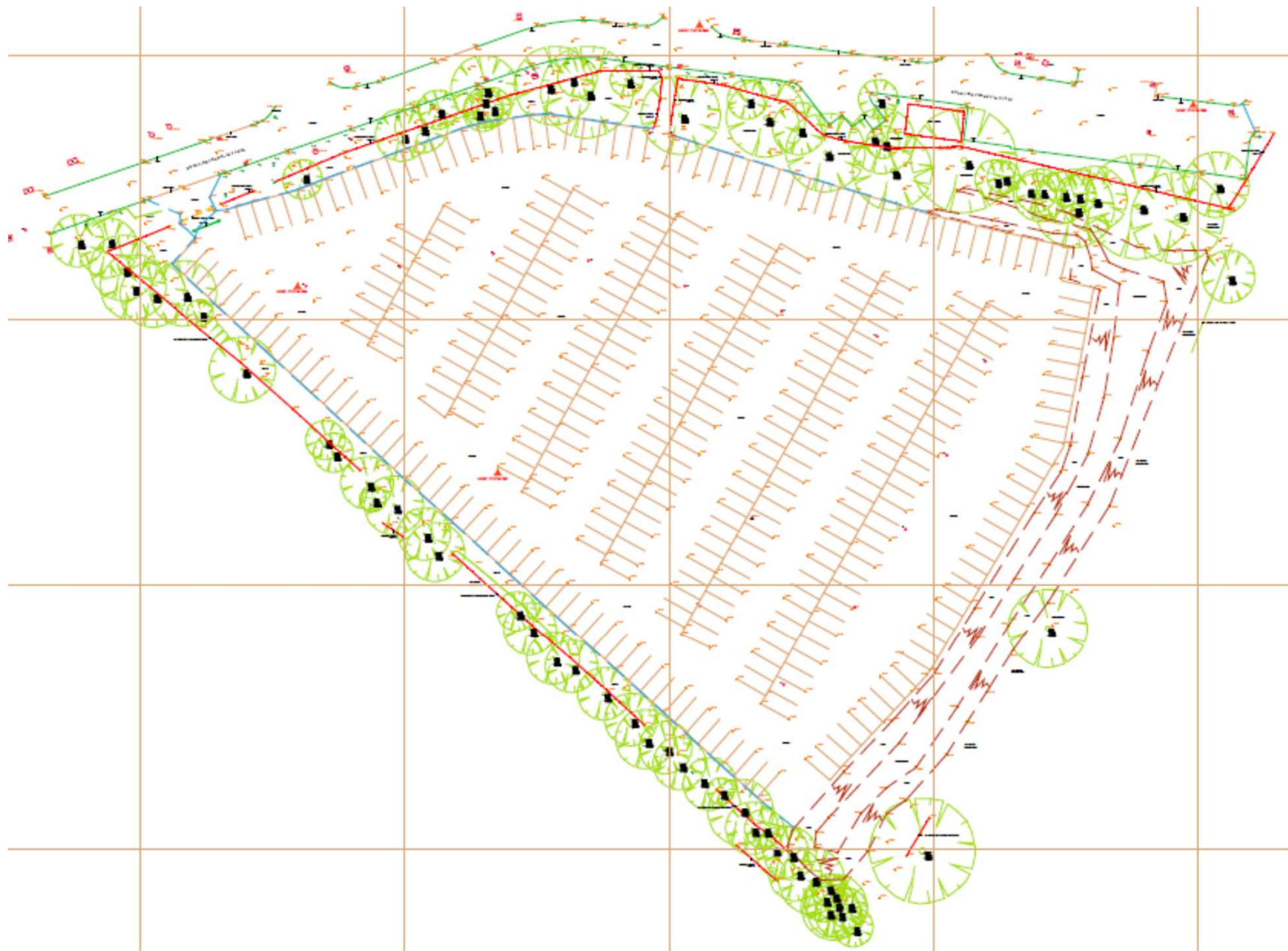


New accessible car parking spaces

[Previous](#)

[Next](#)

[Home](#)



Topographical survey

[Previous](#)

[Next](#)

[Home](#)

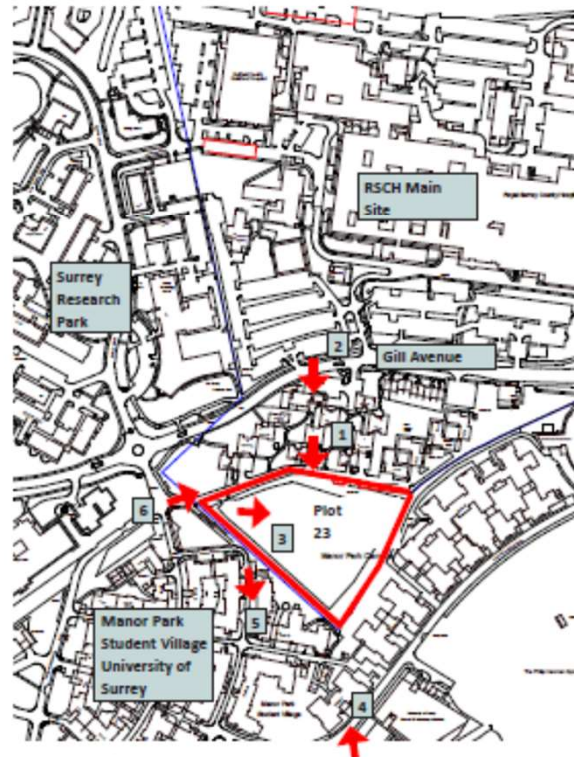


Aerial image of the existing site

[Previous](#)

[Next](#)

[Home](#)

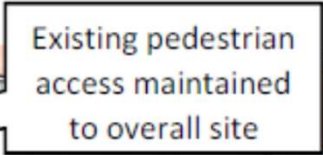


The surrounding area

[Previous](#)

[Next](#)

[Home](#)

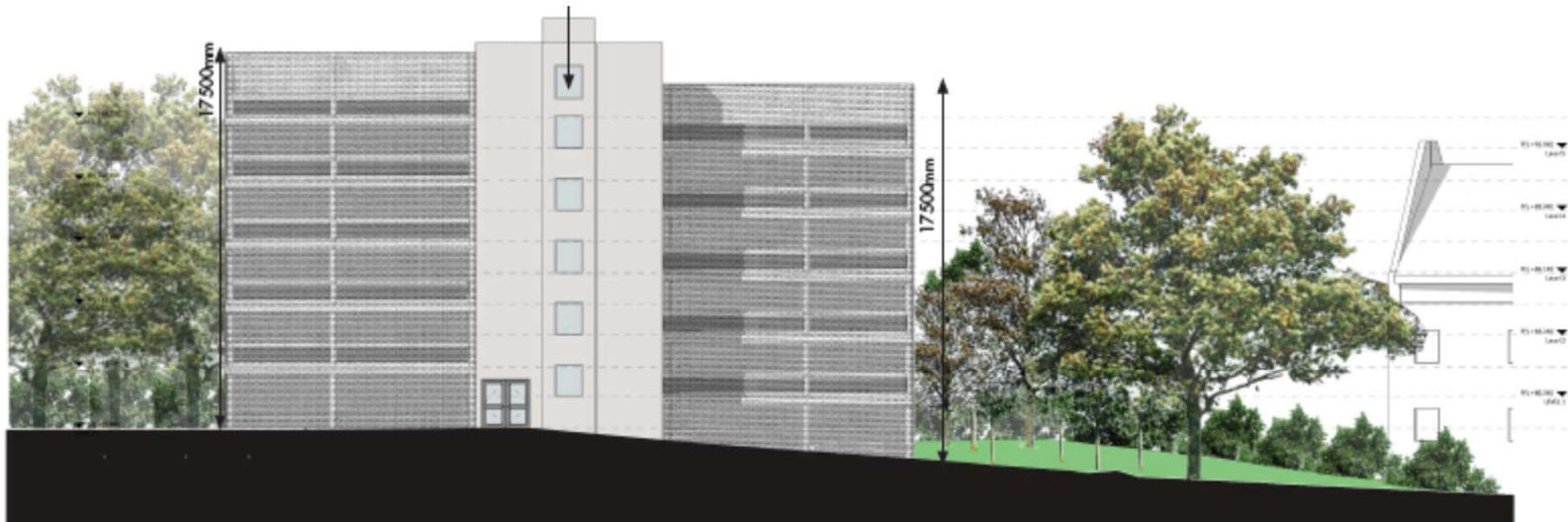


Vehicle site
access off
Rosalind
Franklin
Close

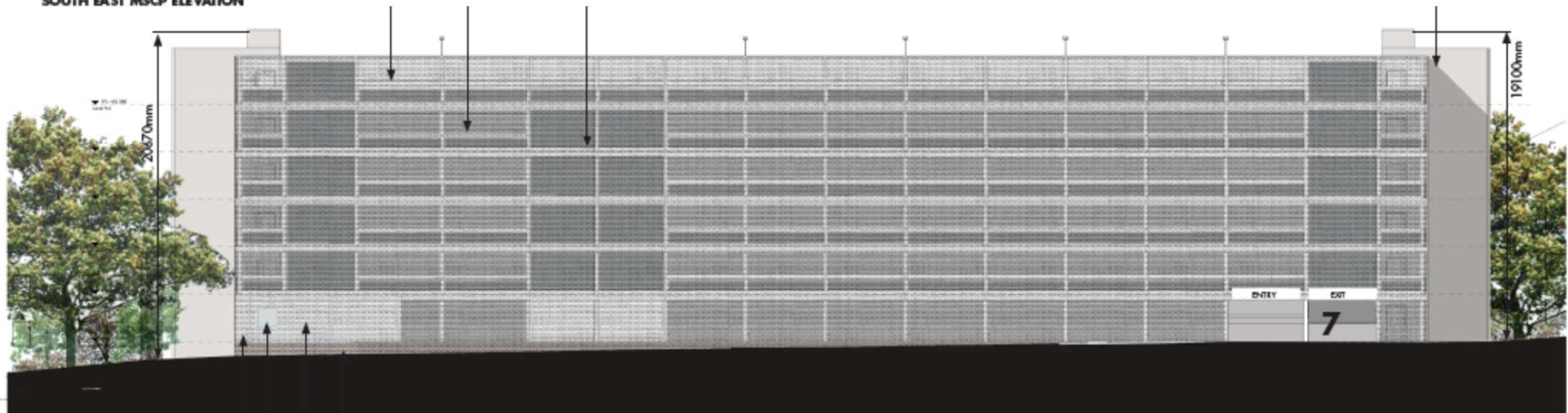
Main vehicle and pedestrian access to Genesis Care

Pre-defined
turning Head
for Refuse /
Fire Truck /
Deliveries

Staff parking for
Genesis Care



SOUTH EAST MSCP ELEVATION



NORTH WEST MSCP ELEVATION

Security Switch 5

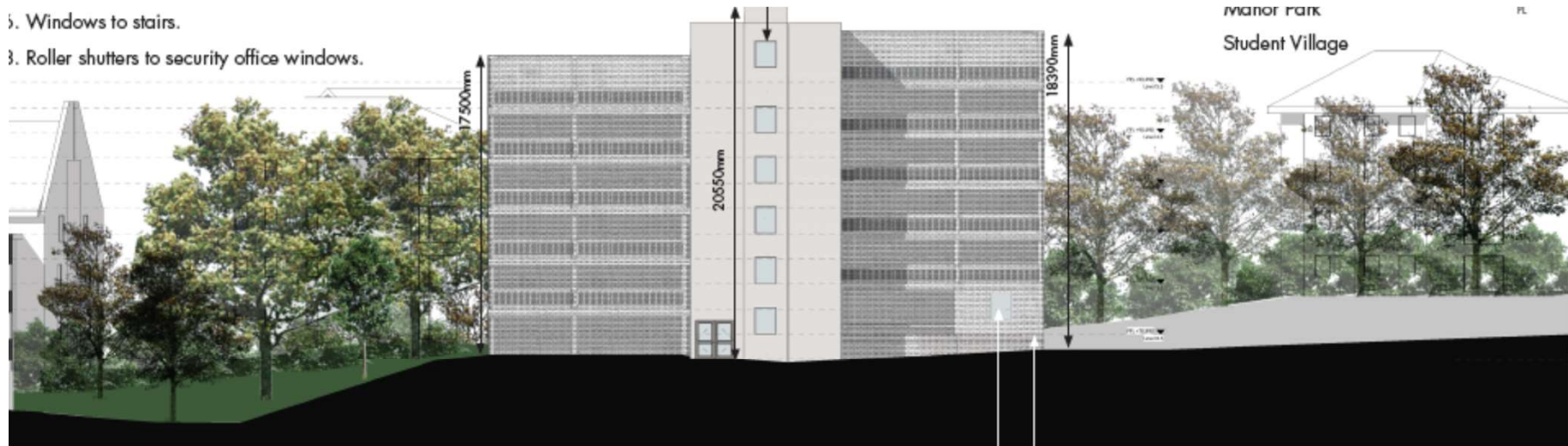
[Previous](#)

[Next](#)

[Home](#)

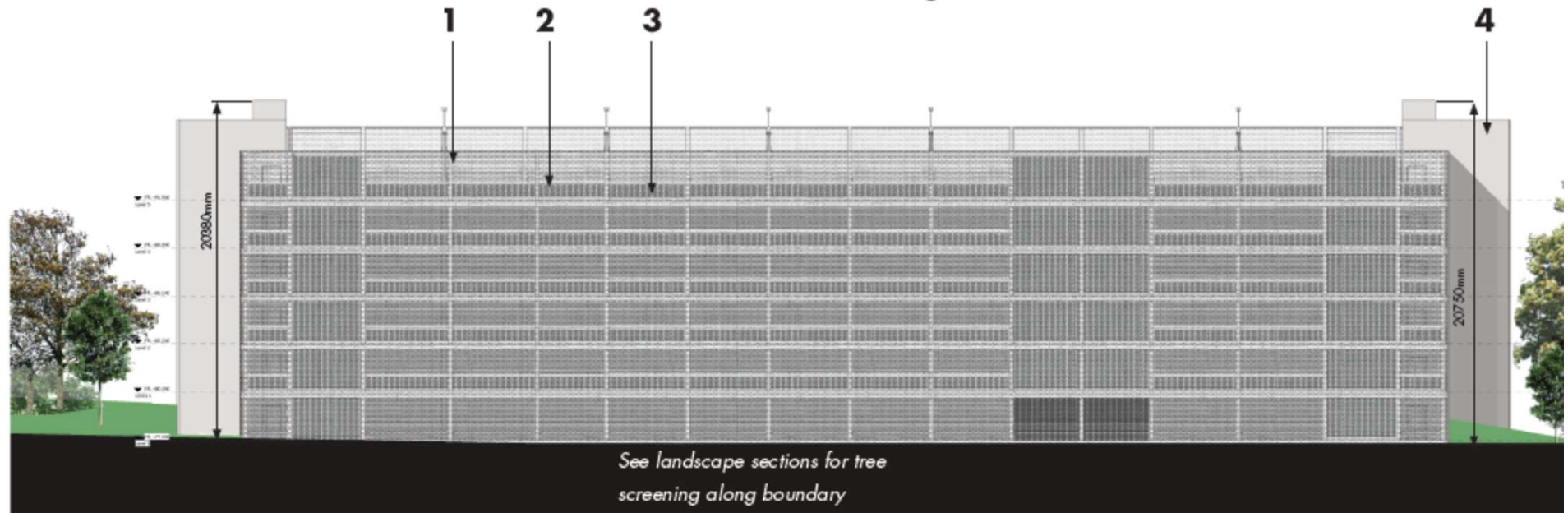
5. Windows to stairs.

3. Roller shutters to security office windows.



NORTH WEST MSCP ELEVATION

8 5



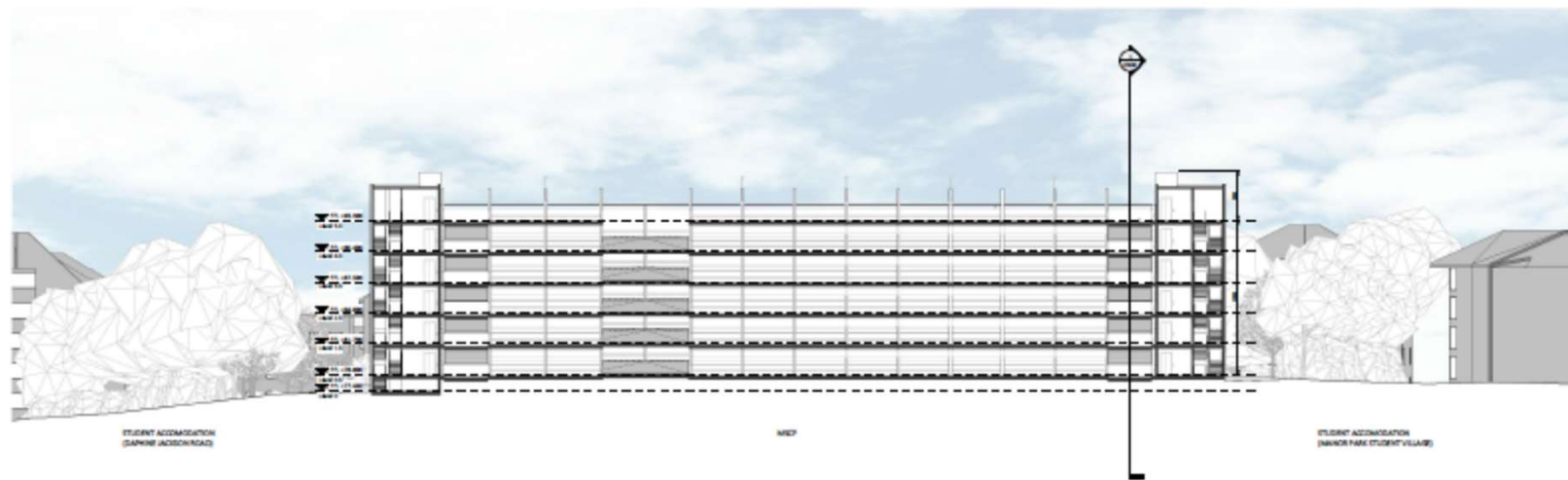
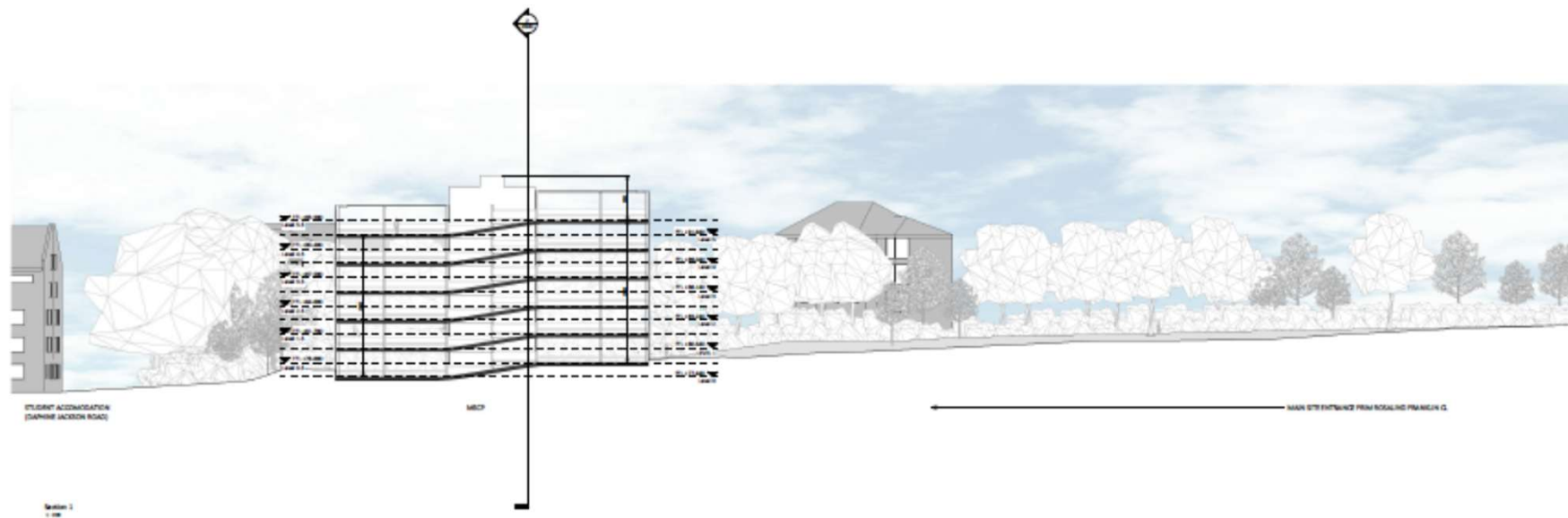
SOUTH EAST MSCP ELEVATION



[Previous](#)

[Next](#)

[Home](#)



[Previous](#)

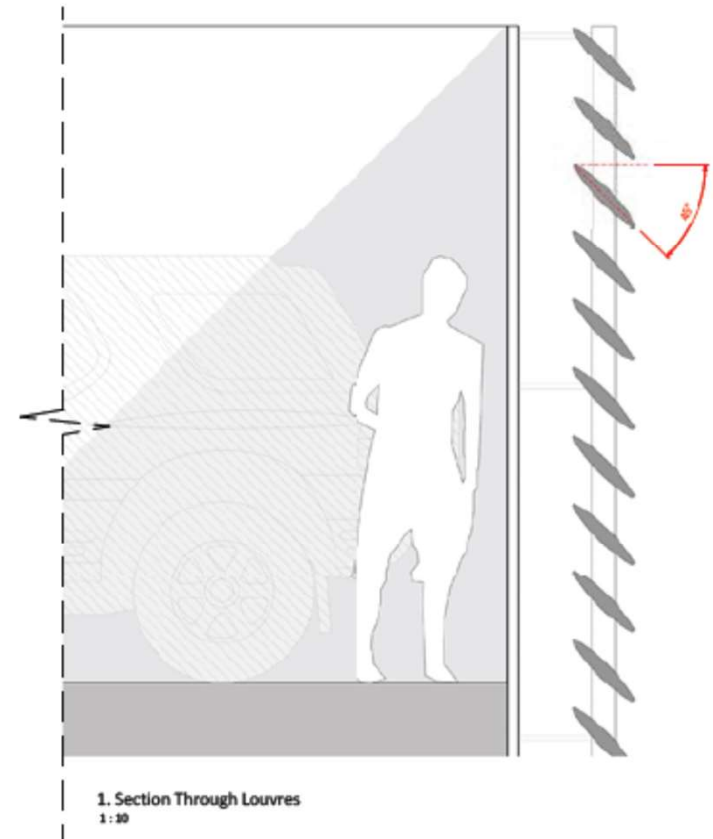
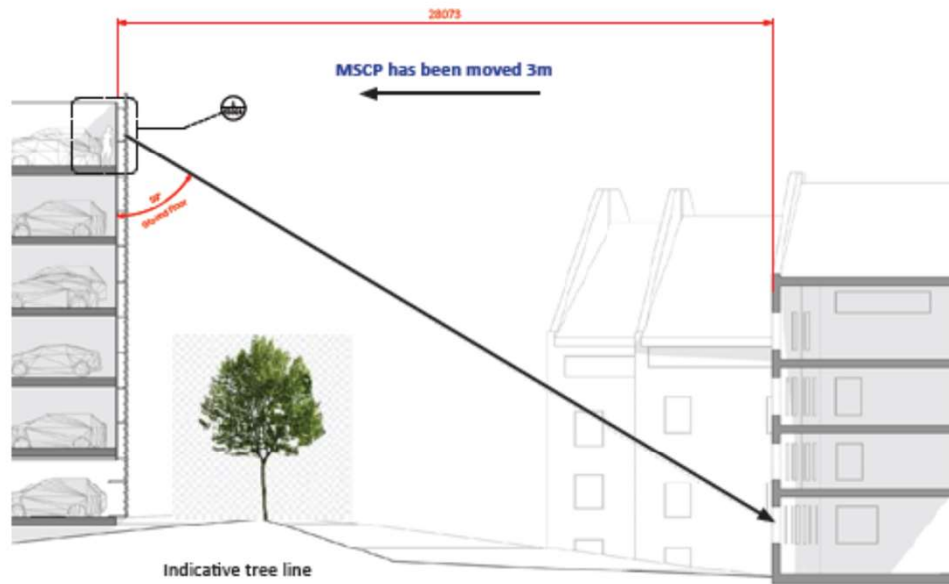
[Next](#)

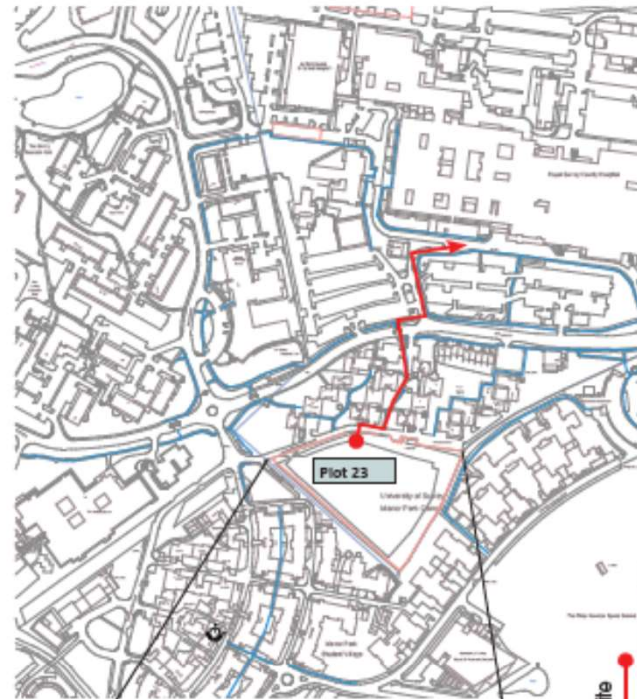
[Home](#)

[Previous](#)[Next](#)[Home](#)



RSCH MSCP Design & Access Statement / 153905-STL-ZZ-ZZ-RP-A-XX-RP02





The pedestrian route from Plot 23 to the main hospital site remains as existing and is an established route of hardstanding with existing lighting, through a residential area with passive supervision.

The exit point from the MSCP is the north stair tower, sited immediately next to the integrated security office which has good surveillance.

A dedicated path is lit along the north boundary of Plot 23 leading to the existing egress point from Plot 23 as illustrated.

See Section 9.6 for details on proposed lighting.



Pedestrian route from Plot 23 to main hospital site

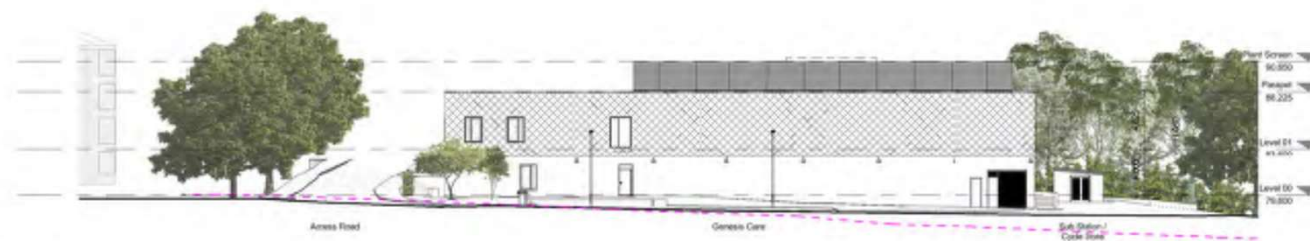
- Pedestrian route from MSCP to hospital site
- Emergency pedestrian route in the event of a fire, egress from southern stair tower



[Previous](#)

[Next](#)

[Home](#)

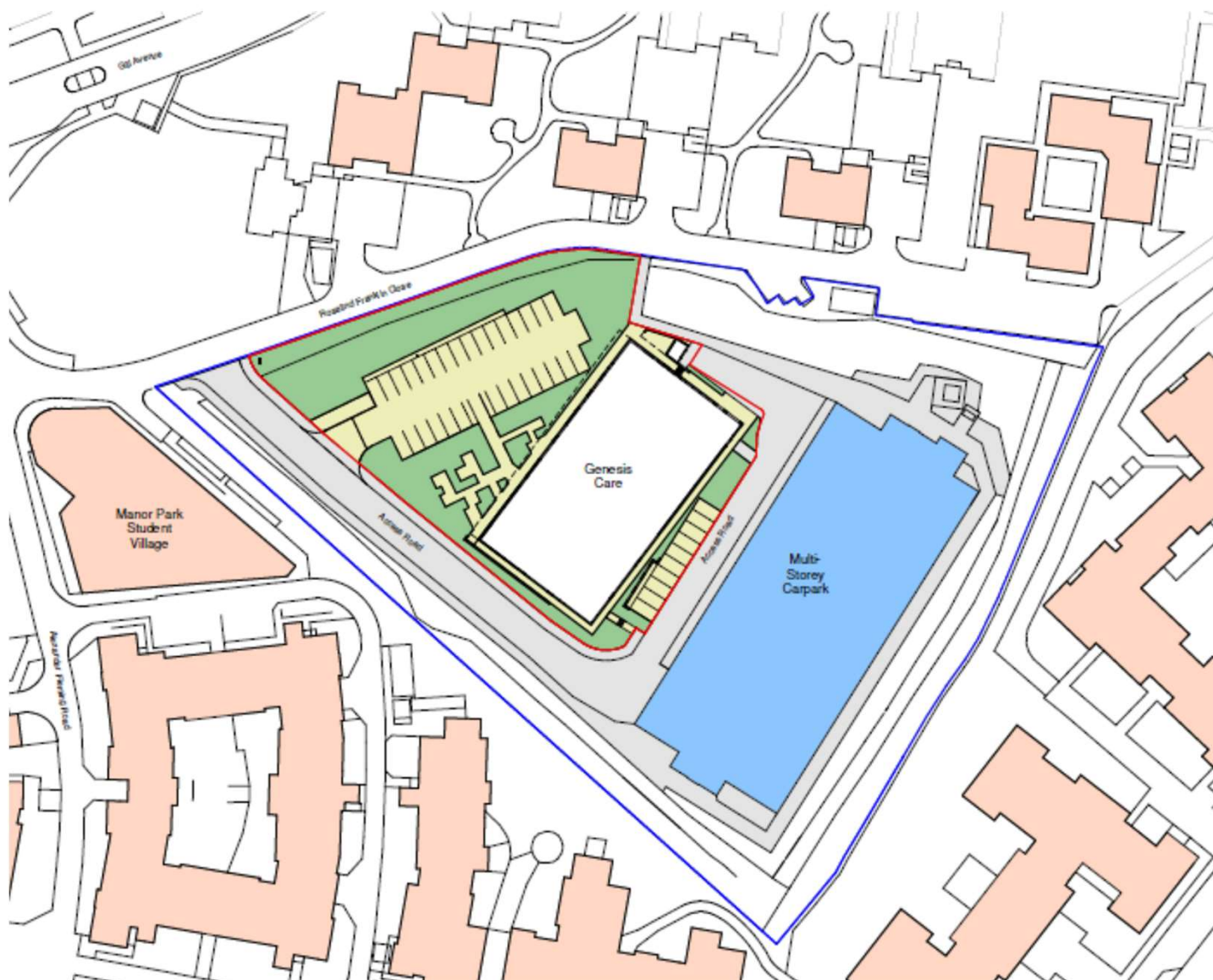


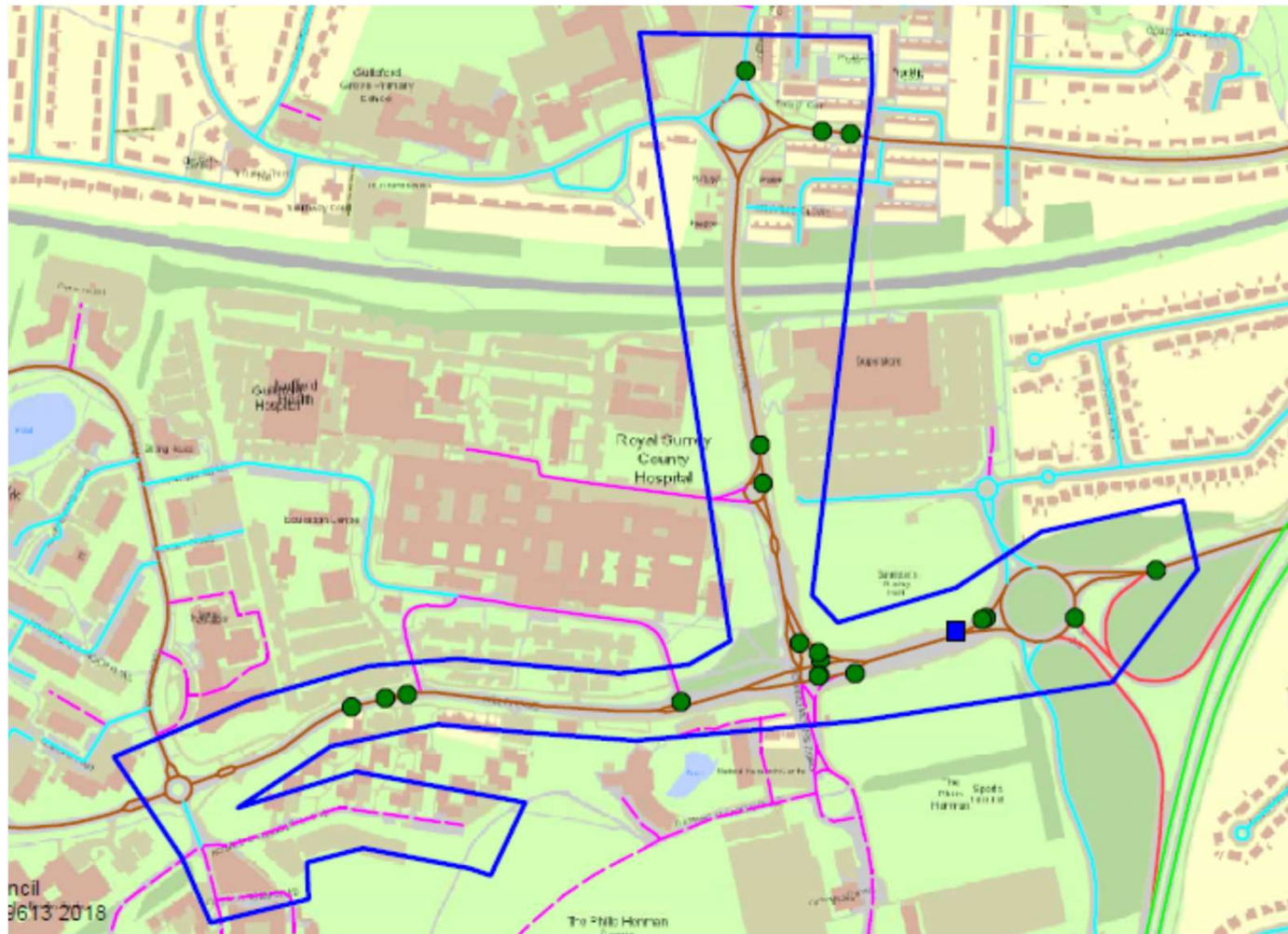
Site sections

Previous

Next

Home

[Previous](#)[Next](#)[Home](#)

[Previous](#)[Next](#)[Home](#)



Surface water

[Previous](#)

[Next](#)

[Home](#)