

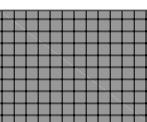
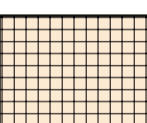

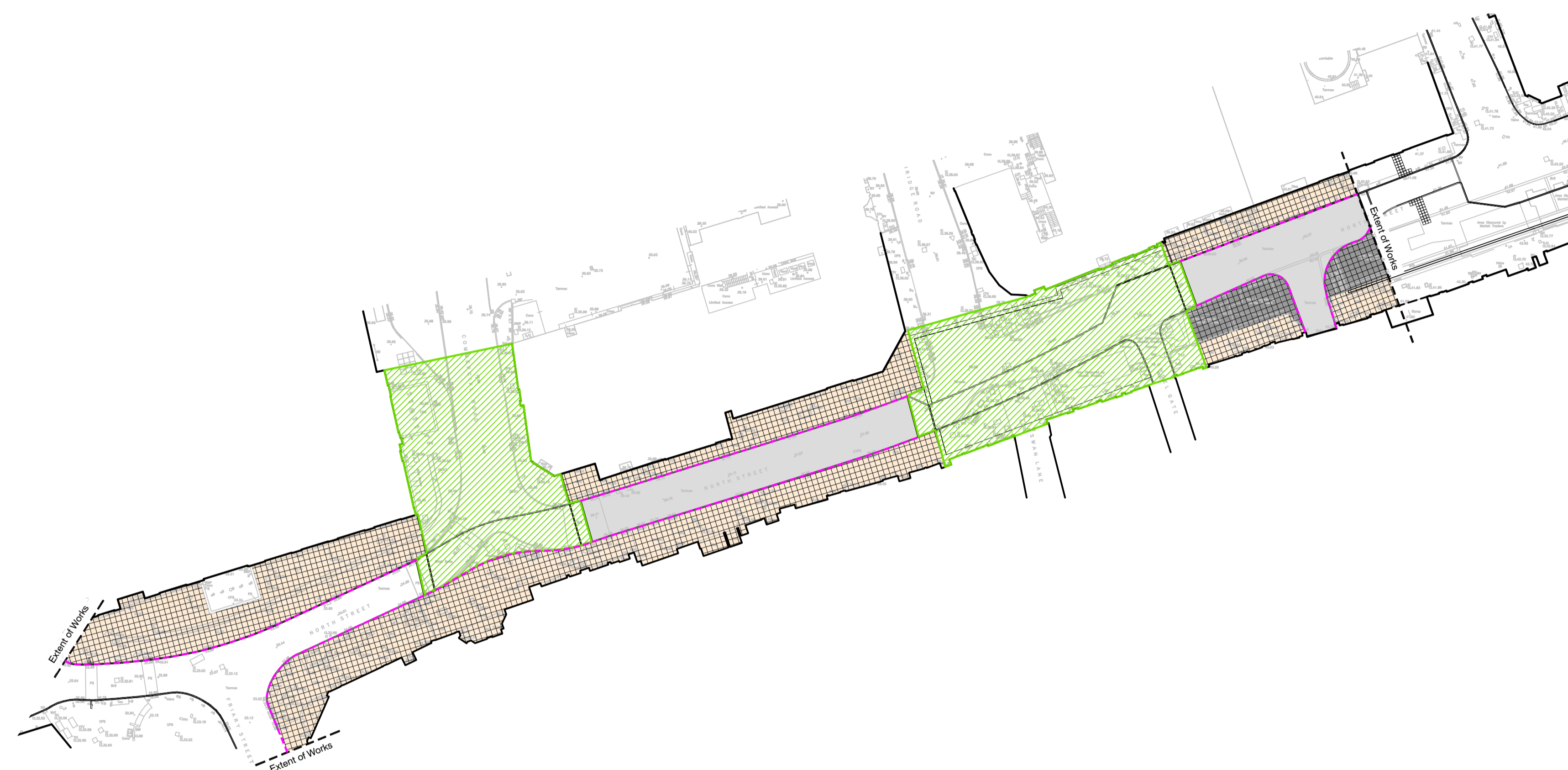
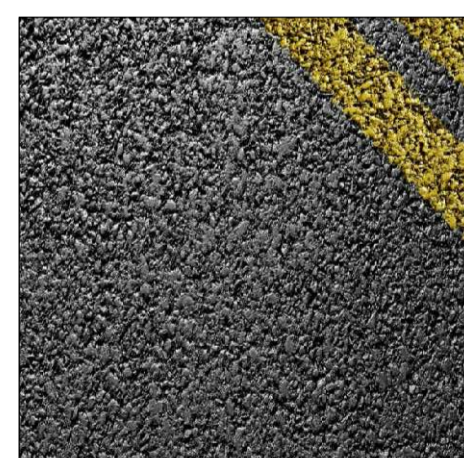


**Legend**

-  New tarmac surfacing or similar
-  New paving curb or similar
-  New paved footpath construction
-  Repaving to existing pavements
-  Excluded



**Materials**



**Bitumen Macadam Road Surface or Similar**  
 Note: To adoptable standards



**Marshall's Concrete Paving or Similar**  
 Size: 600 x 900mm  
 Note: To adoptable standards



**Paving Curbs or Similar**  
 Size: 255 x 150mm  
 Note: To adoptable standards

C	18.01.22	Materials changed
B	17.01.22	Extent of works revised
A	14.01.22	Hatch area reduced
-	14.12.21	First Issue

Revisions



**MURDOCH WICKHAM**  
 THE LANDSCAPE ATELIER

The Tyle Barn  
 Bradbourne House  
 East Milling  
 Kent  
 ME19 6DZ  
 01782 752780  
 mail@murdochwickham.com  
 www.murdochwickham.com

Job Title  
**NORTH STREET, GUILDFORD**

Client  
**St Edward Homes Ltd**

Drawing Title  
**North Street Improvements**

Date **15 December 2021**  
 Scale **1:500 @ A1**  
 Drawn **TB**

Drawing no. <b>1589-100</b>	Rev. <b>C</b>
--------------------------------	------------------